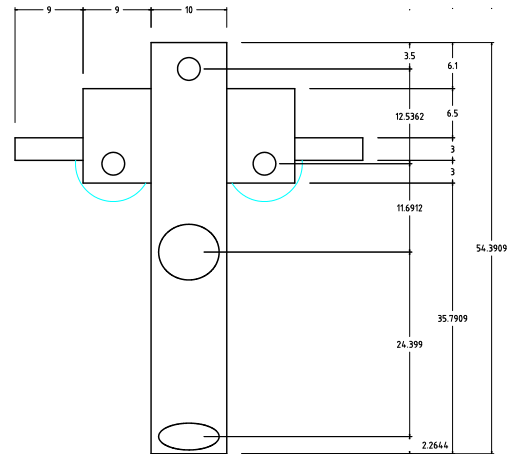
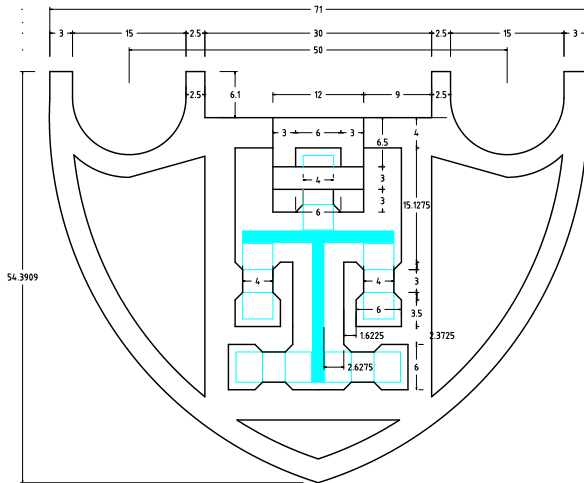
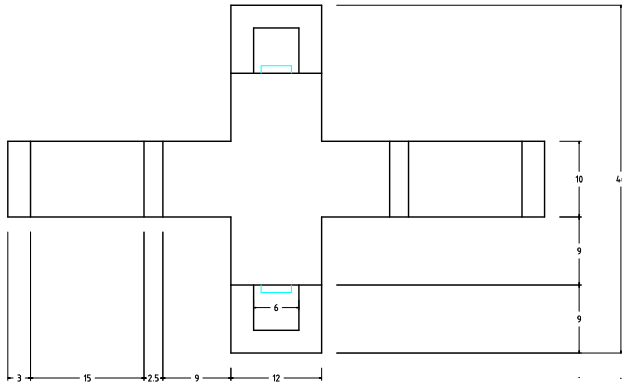


Système de glissement:



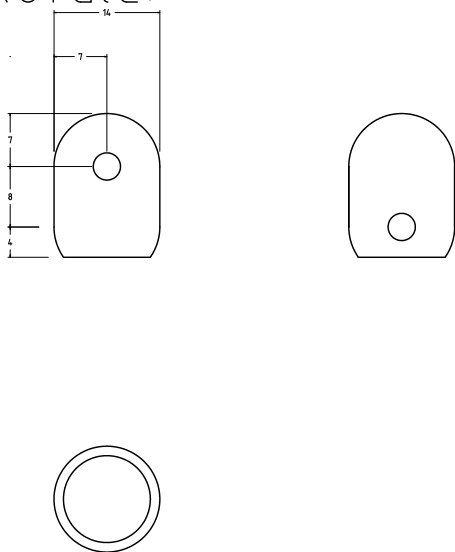
scale 1:1 A4
env 100 g

Impression en PLA
2.5 mm par couche

Reprap Jeanne

Système de glissement
et de fixation des biellettes
le long des trois axes (profil en T)
@Frankloman
@trankloman
Hackerspace @jeannedhack

Rotule:



Fixation Rotule / Bielette

