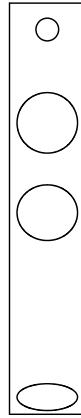
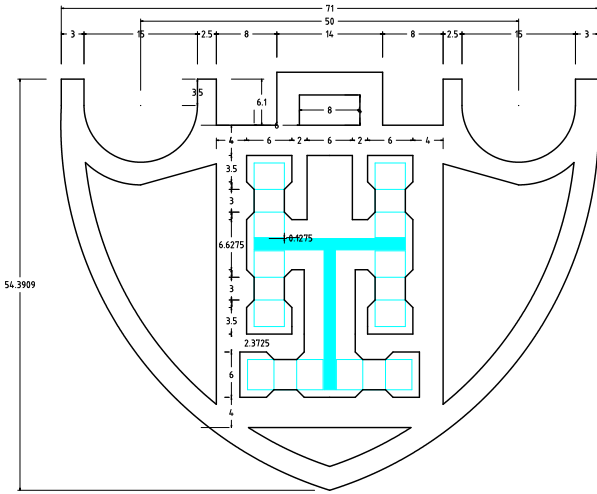
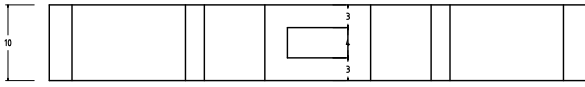


# Système de glissement:



scale 1:1 A4 env 100 g

Impression en PLA  
2.5 mm par couche

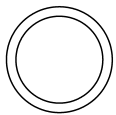
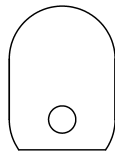
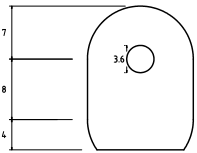
Reprap Jeanne

Système de glissement  
et de fixation des biellettes  
le long des trois axes (profil en T)

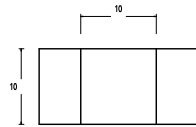
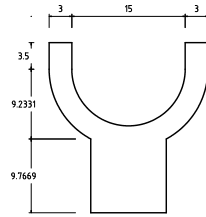
@Gnieark <https://blog-du-grouik.inad.fr>  
@Trankilomah  
Hackerspace @jeannedhack

page  
1/1

# Rotule:



# Fixation Rotule / Bielette



Index	Description	Version	Initial	Gnieark	swmm	swmm	date
B	Encoches pour courroies GT2						
A	Version initiale						